

# CERTIFICATE OF LOCATION OF GOVERNMENT CORNER

East 1/4 Corner of Section 22, Township 106N, Range 41W, 5th P.M.

STATE OF MINNESOTA, County of Murray

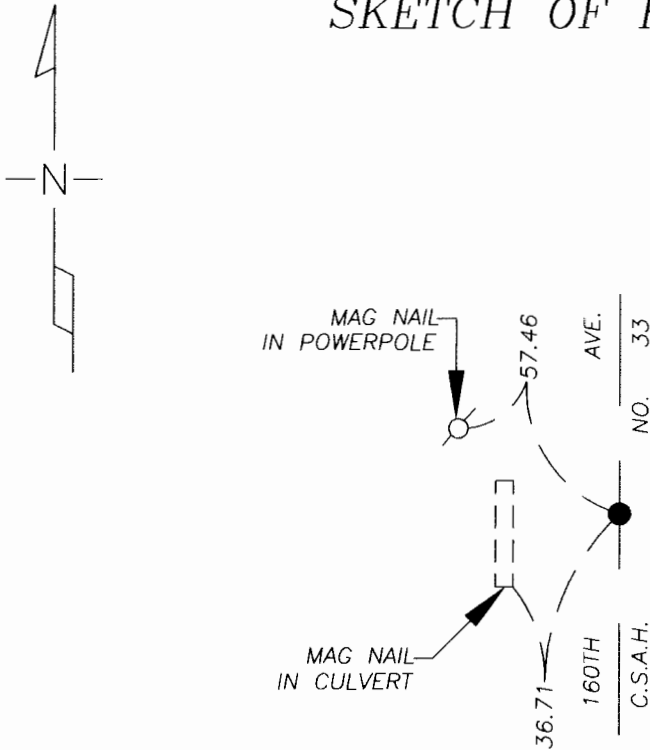
At the corner location shown on the sketch

On 11/09/05 found a bent steel fence post over 10" X 12" stone 1 foot deep on centerline of road.

left stone as found       lowered monument,       removed steel post

On 11/09/05 placed a 1" iron pipe with red survey cap #43803 over top of stone.

## SKETCH OF REFERENCE TIES



MURRAY CO. COORDINATES  
 NAD 83 (1996 ADJ.)  
 144950.36N  
 506138.24E

I hereby certify that this document and the data contained herein was prepared by me or under my direct supervision.

Dennis Ray Esplan      12/13/05  
 SIGNATURE      DATE

MN. LICENSE NO. 43803

- Land Surveyor,       Professional Engineer  
 County Surveyor,       County Engineer

OFFICE OF THE COUNTY RECORDER

I hereby certify that this document was filed in the Co. Recorder's Office at \_\_\_\_\_ on the

\_\_\_\_\_ day of DEC 14 2005

County Recorder James V. Johnson  
 By \_\_\_\_\_, Deputy

DOCUMENT NO. \_\_\_\_\_

**Statement of Evidence**

**Original Township Subdivision was surveyed by L.G.M Fletcher in 1861.**

**1975 Murray Co. Hwy. Dept. records indicate that an iron pin was found and ties were set.**

**1959 Murray Co. Hwy. Dept. grading plans indicate a stone was found.**

**November 2005**

**Greg Zieske and Brad Chester with Zieske Land Surveying, Inc. excavated with a backhoe and found a bent steel fence post over 10" X 12" stone. Placed a 1" iron pipe with red survey cap over top of stone.**

